

Upcycle a plain box into a dreamy dollhouse

Build the dreamiest, eco-conscious, dollhouse using your Epson EcoTank printer and an old box. Customise your perfect mini home with loads of floor, wall and décor options.





What you need:

- An Epson EcoTank Printer
- Plain A4 printing paper
- A glue stick
- Scissors
- A box or two
- Hot glue gun (adult supervision required)

Instructions



Step 1

Download the fun printables and print. Remember to print additional pages, should you would wish to add more rooms, and cover the outside of the dollhouse.



Step 2

Stick the wall, floor and roof panels to the box and carefully cut them out.

Cut out any of the décor items you want to use to add some character to your dollhouse.



Step 3

To make your first exciting room, ask an adult to hot glue the wall and floor panels together to create a box.

Now add the décor to your first room!



Step 4

Repeat Step 3 until you have all the number of rooms you want.

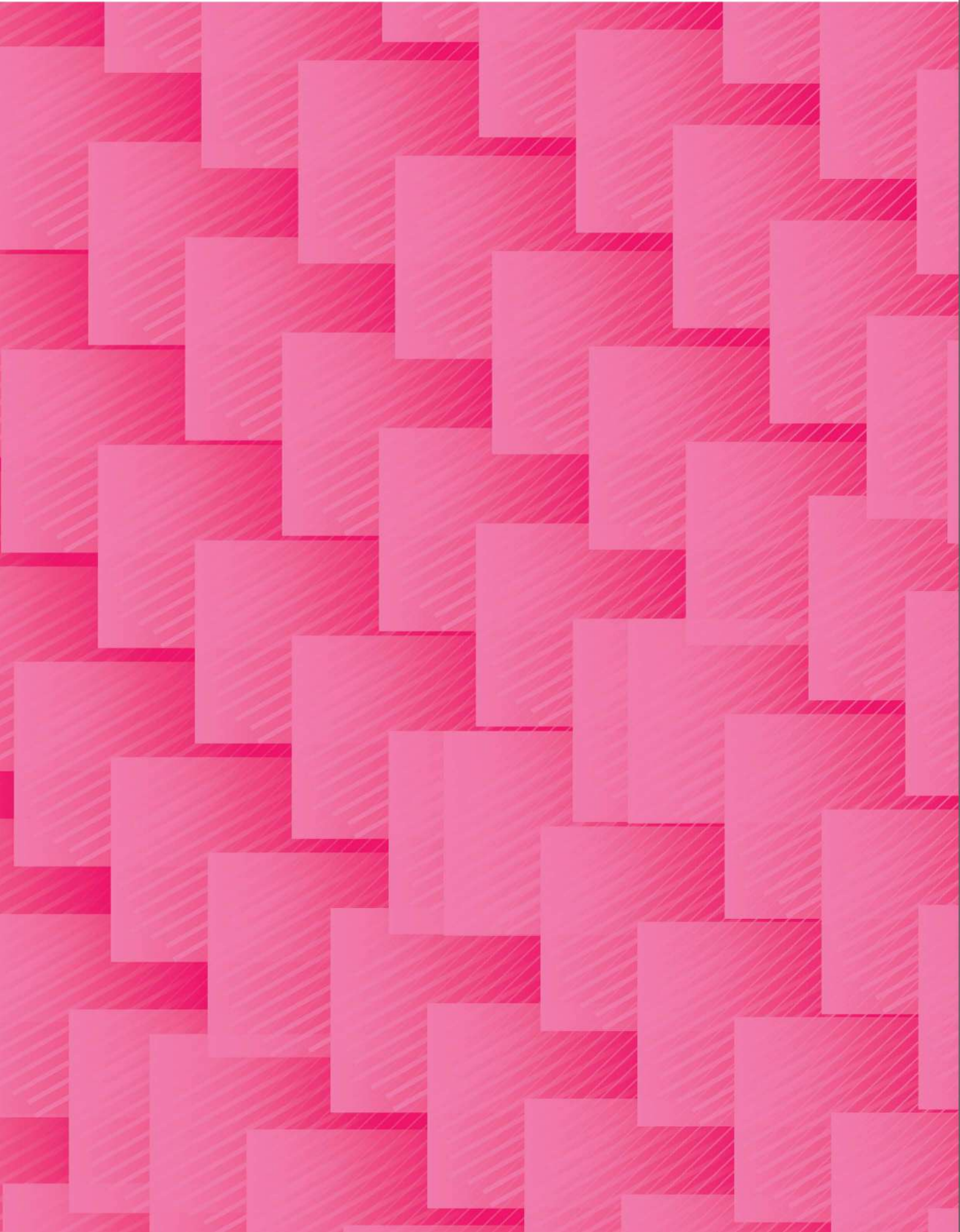
Finally glue all the rooms together to create your dreamy house.



Step 5

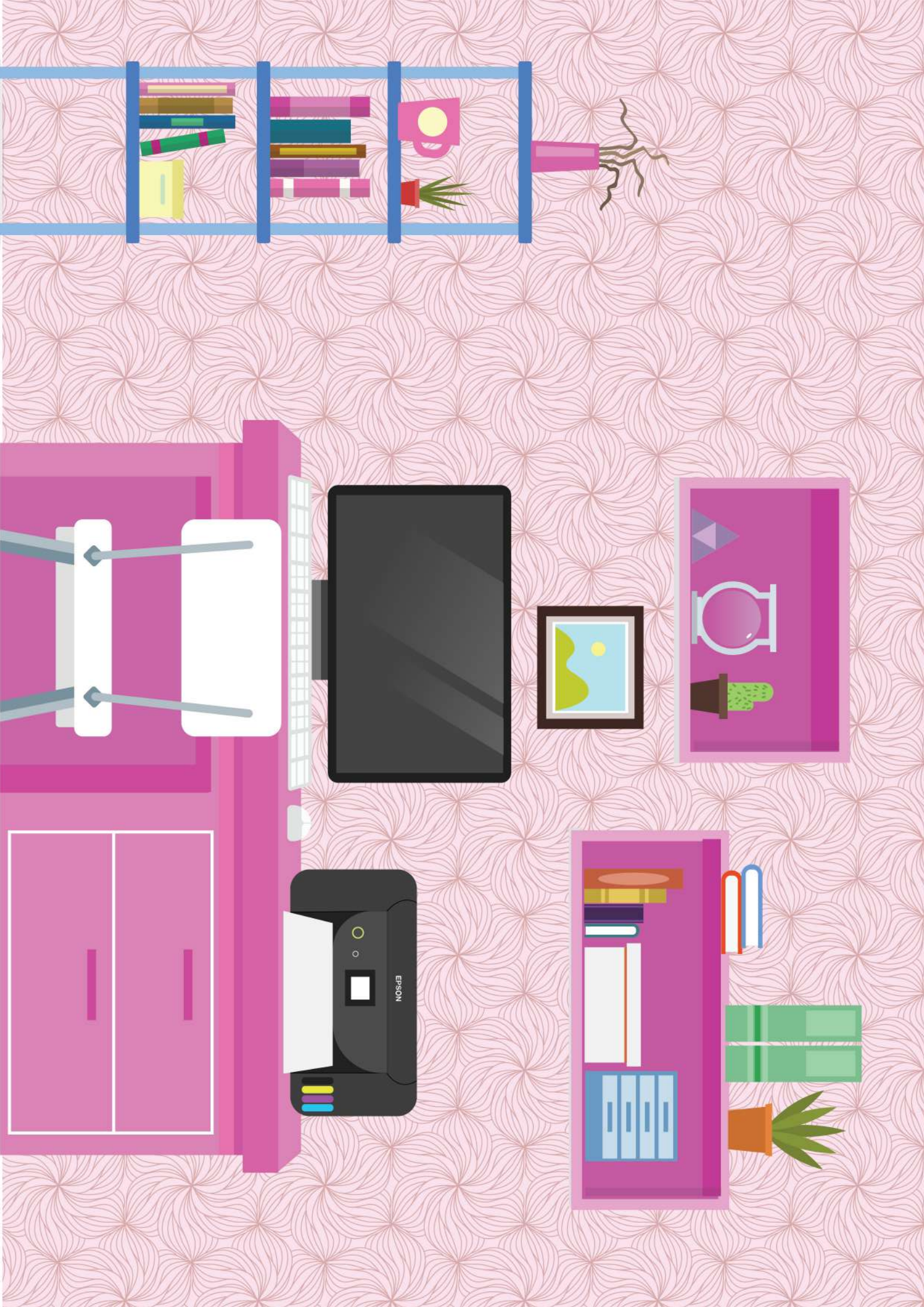
Play and enjoy your upcycled dollhouse! Recycle or build another one!

*Depending on the size of the dollhouse you'd like to build, you may need to print multiple pages of some pages.



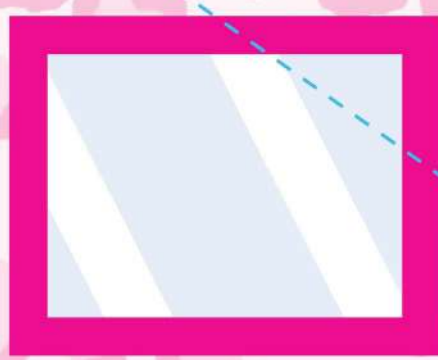
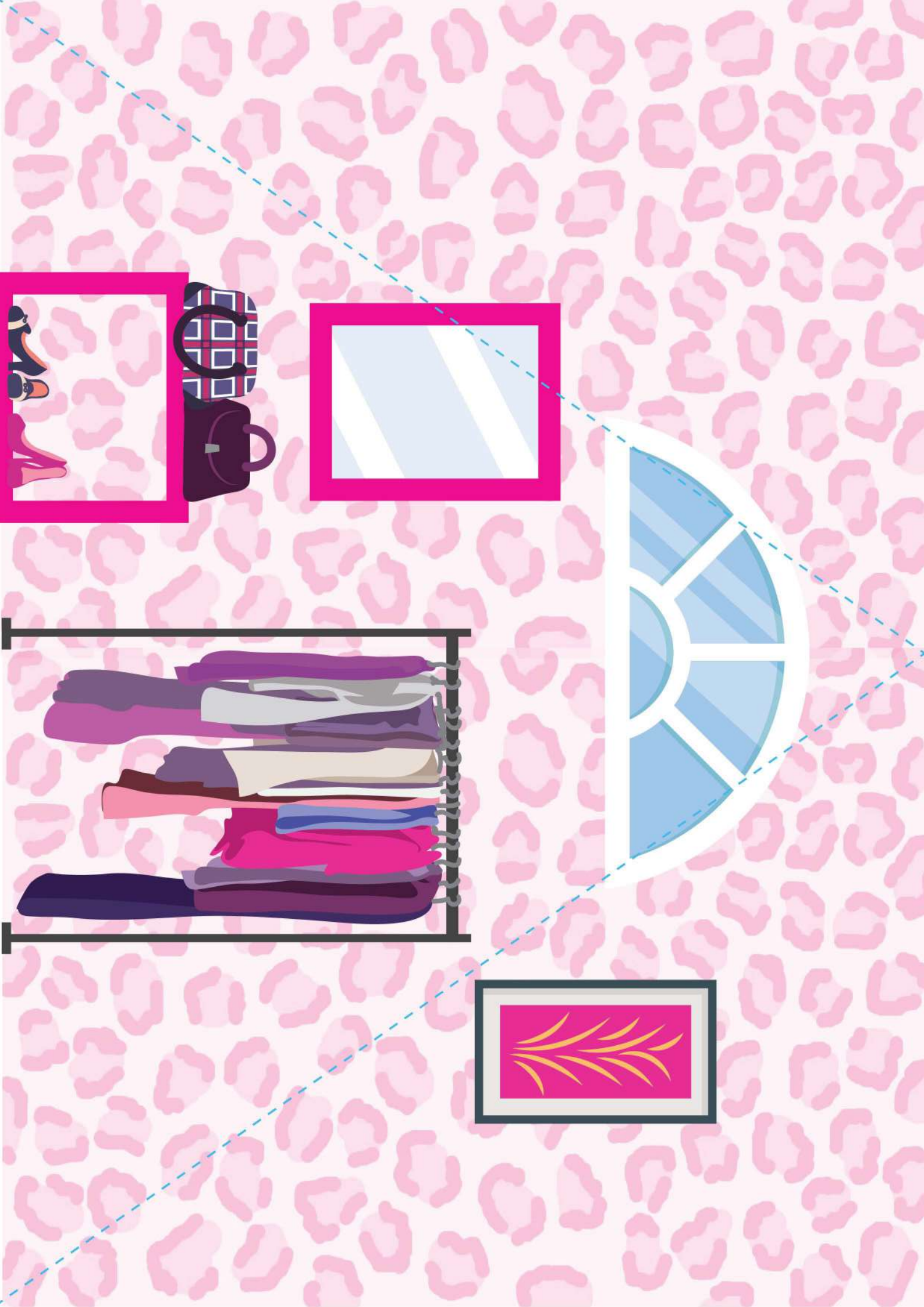
Build your doll a dream home

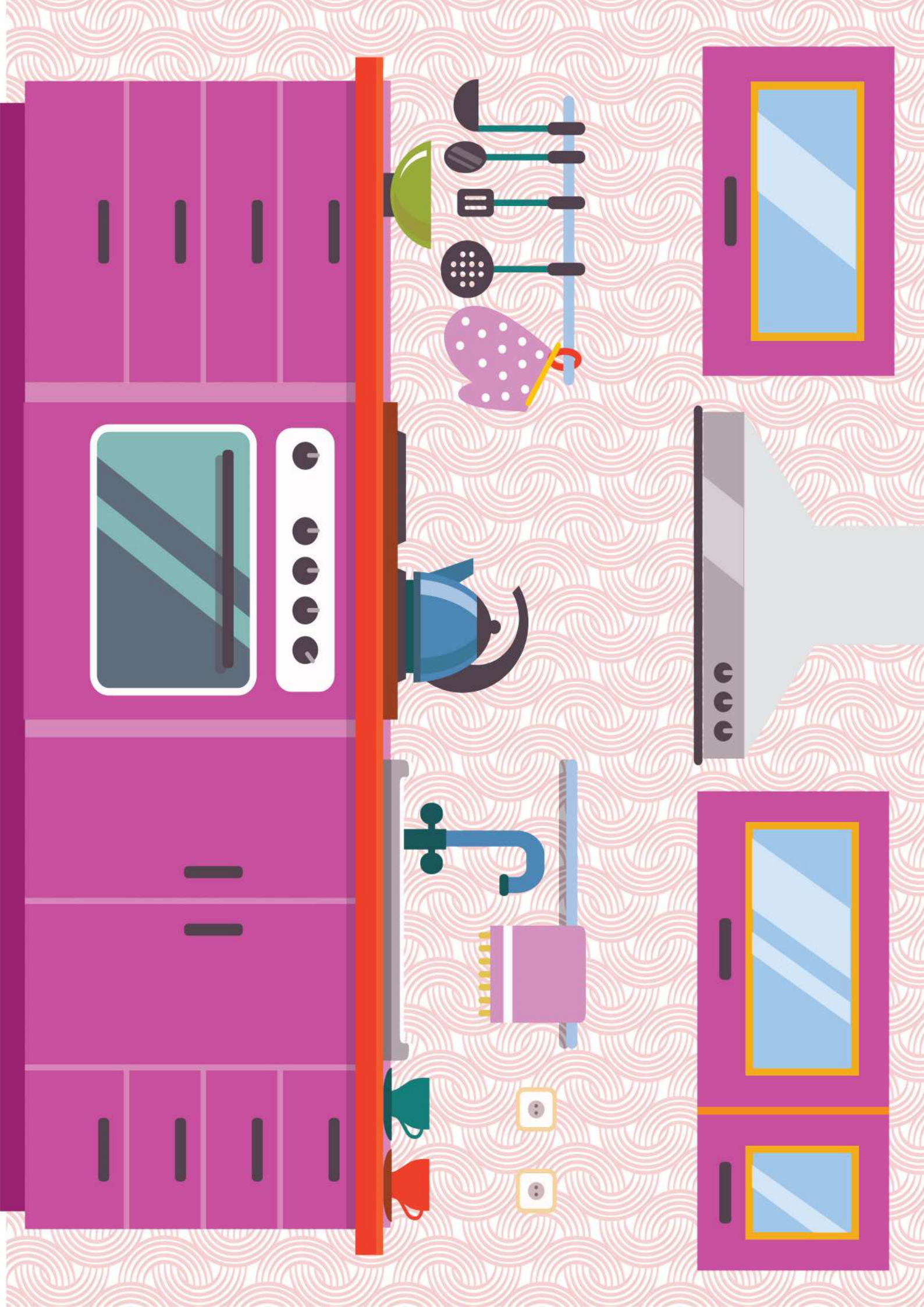
- Study Room
- Living Room
- Bathroom
- Bedroom
- Kitchen





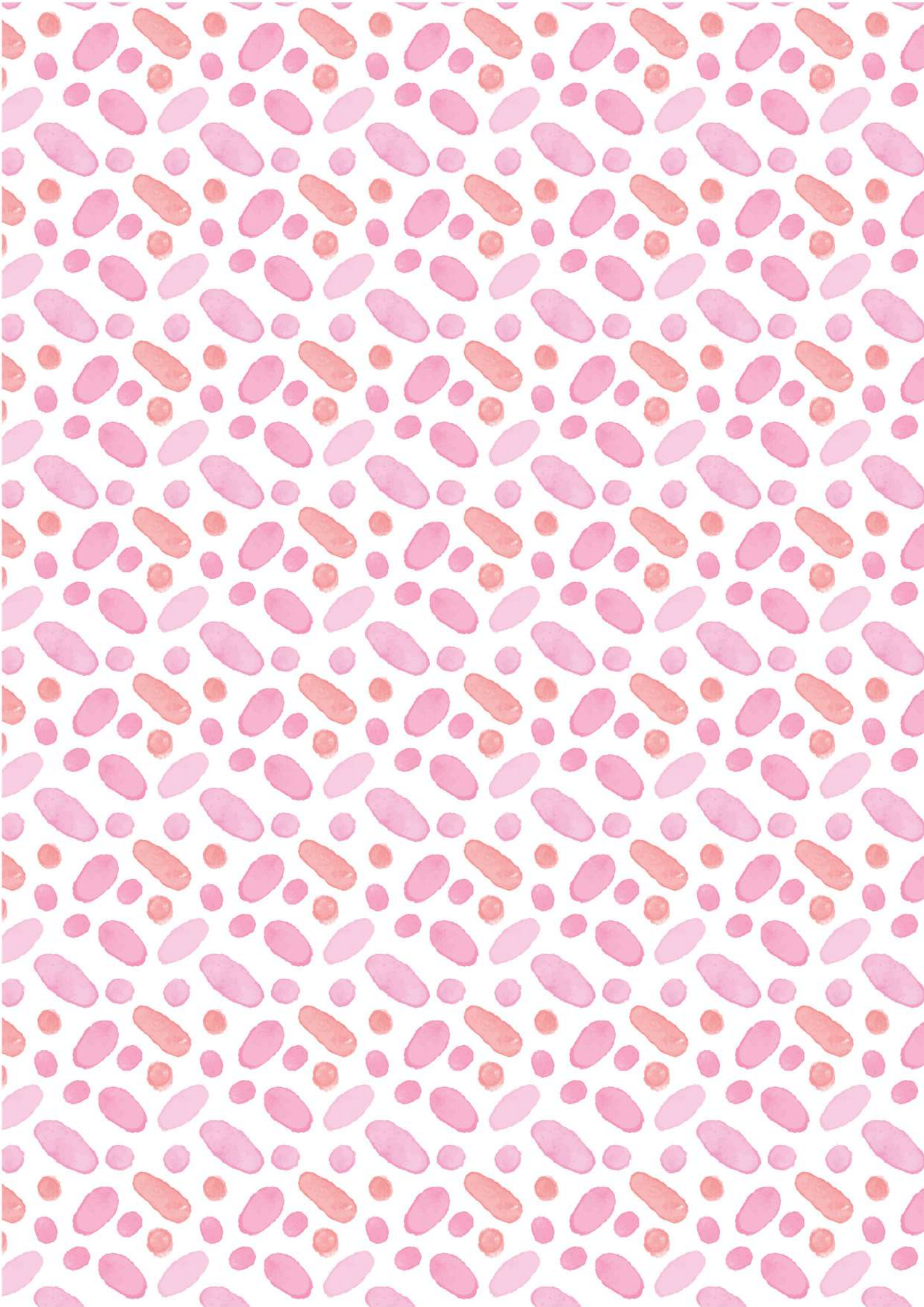


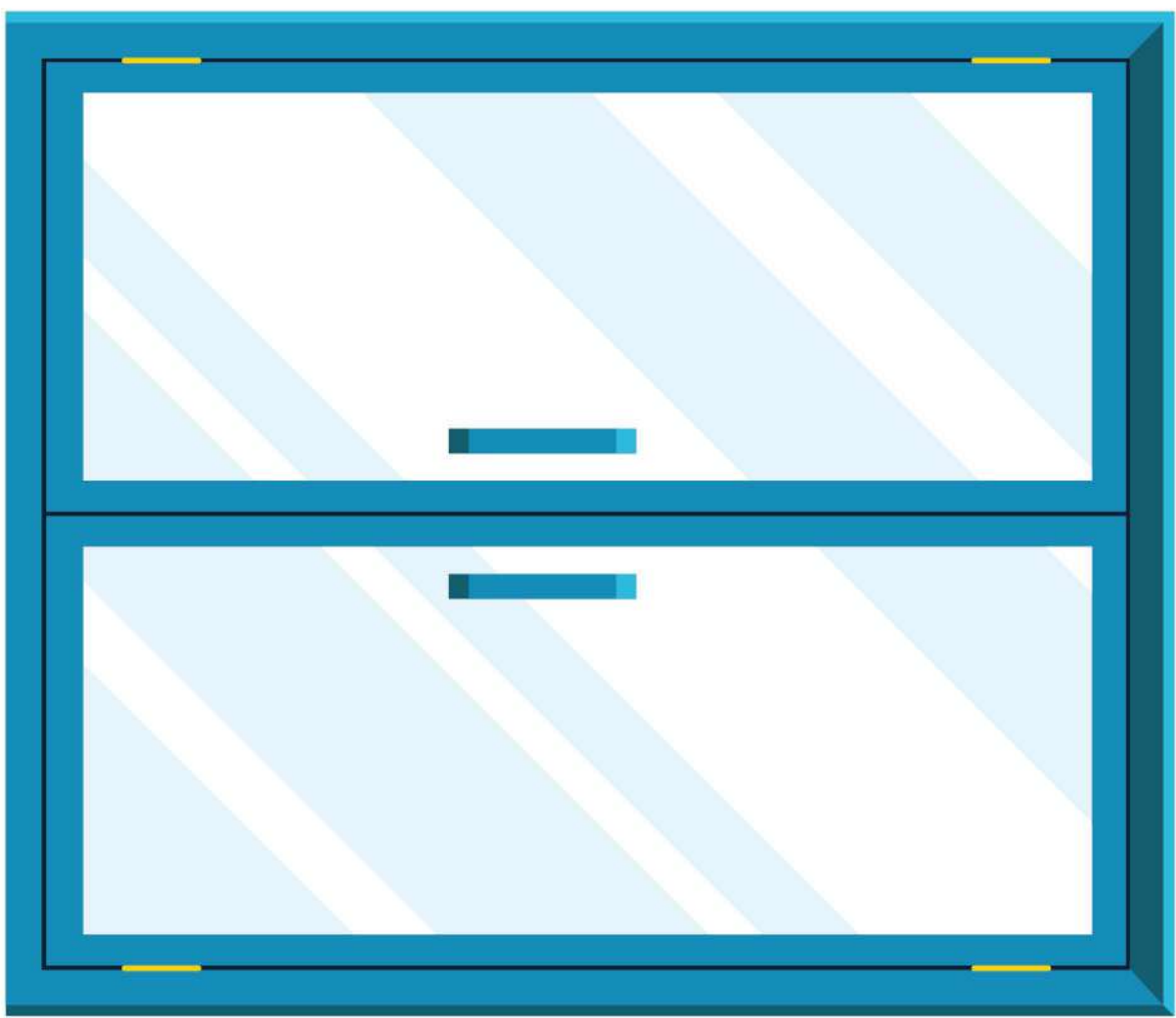
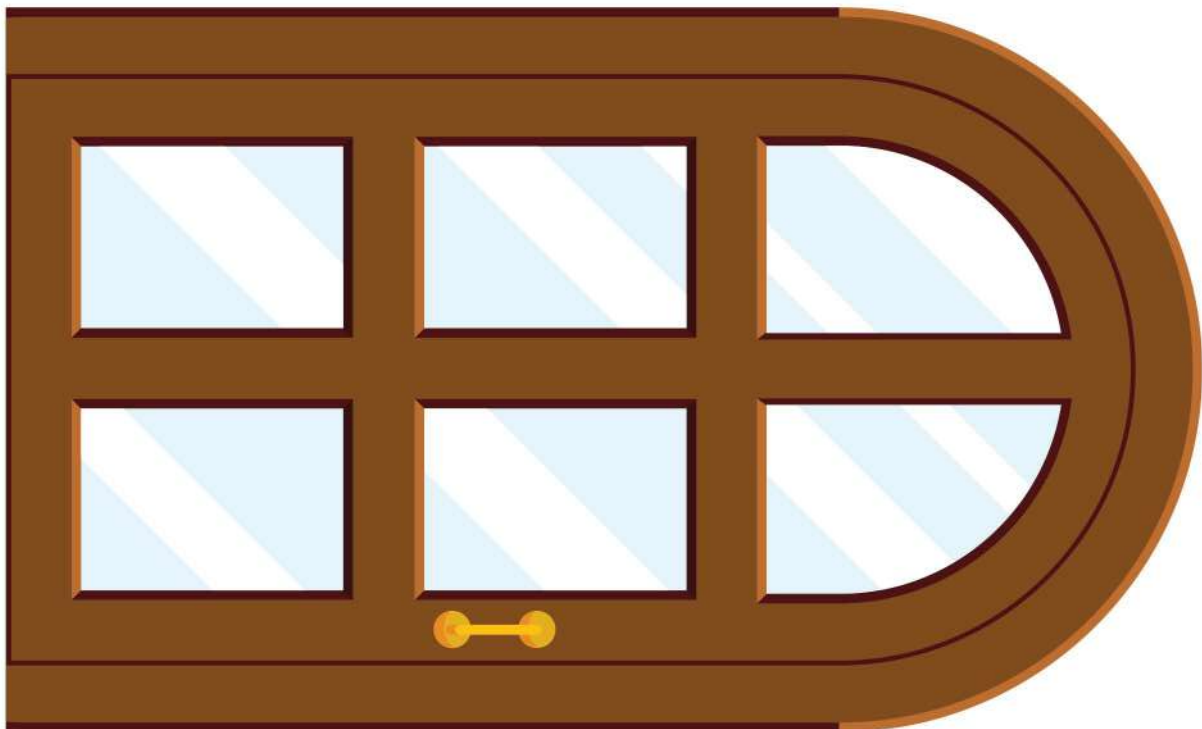


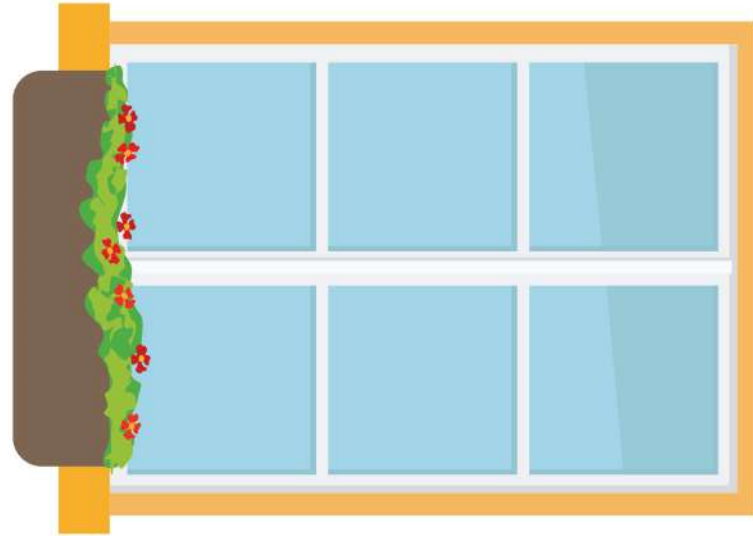
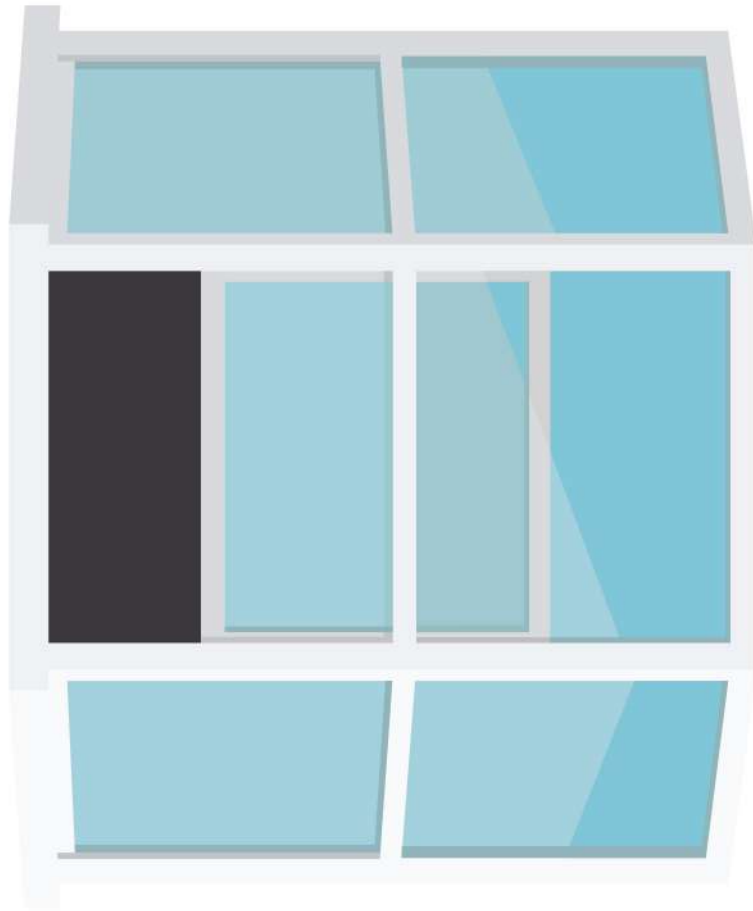


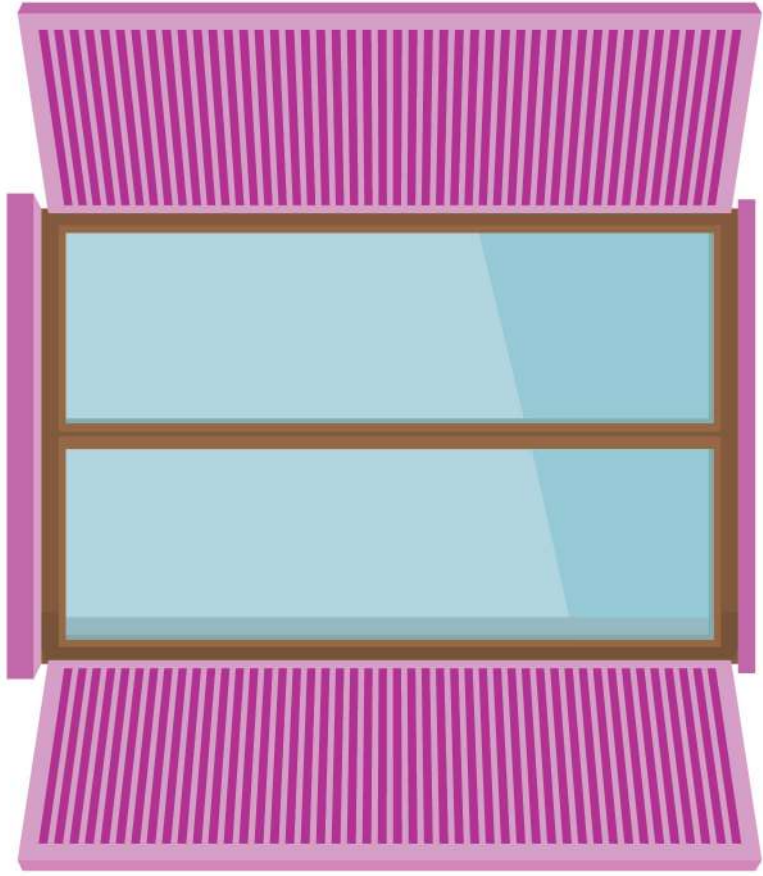
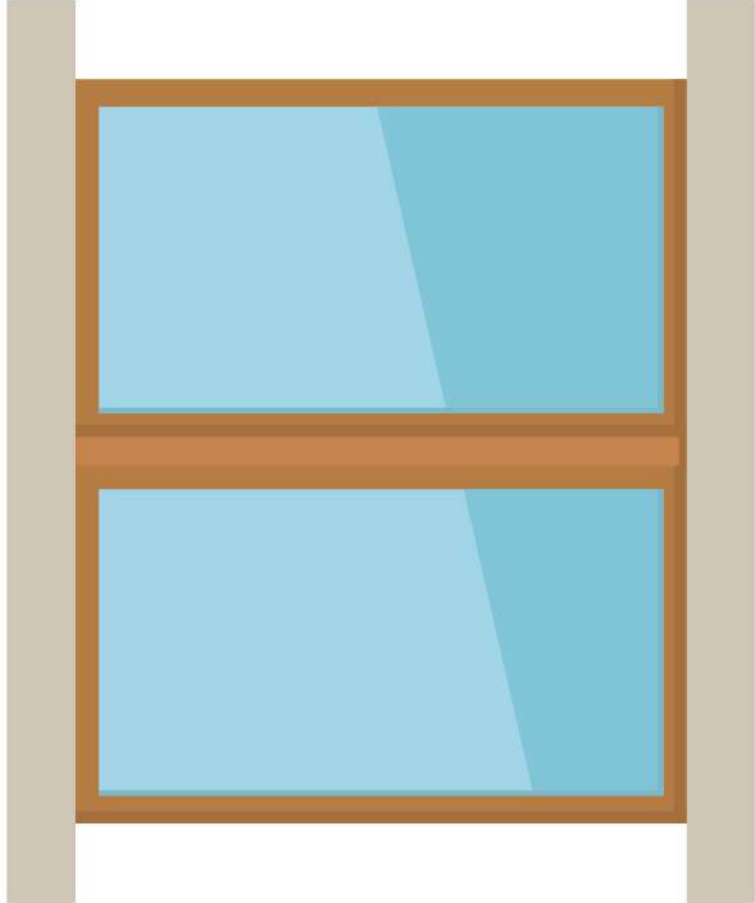
A house is not complete without flooring

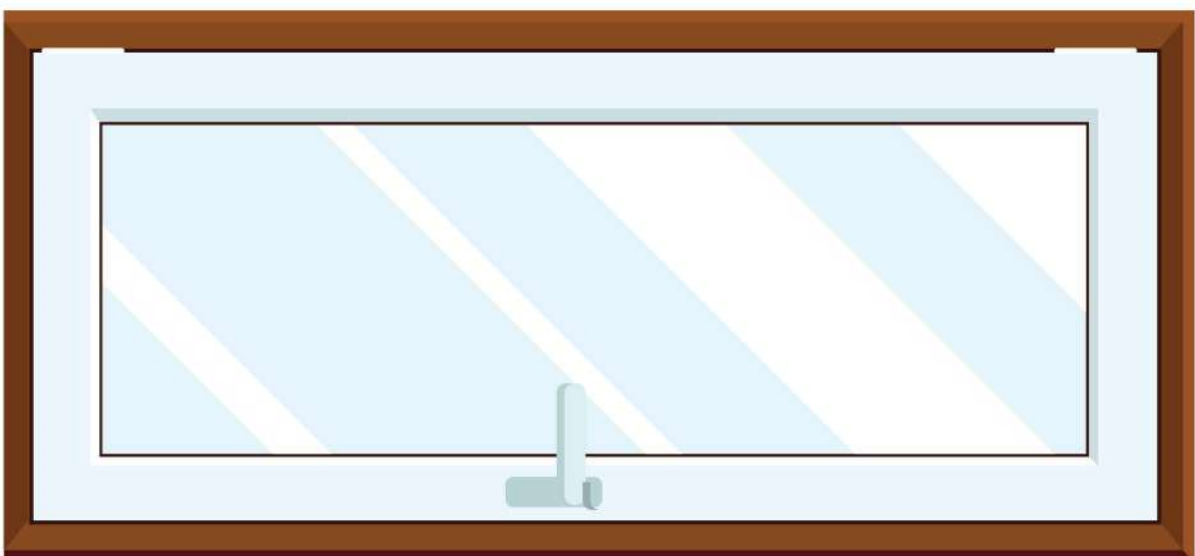
Pick from a selection of vibrant designs.

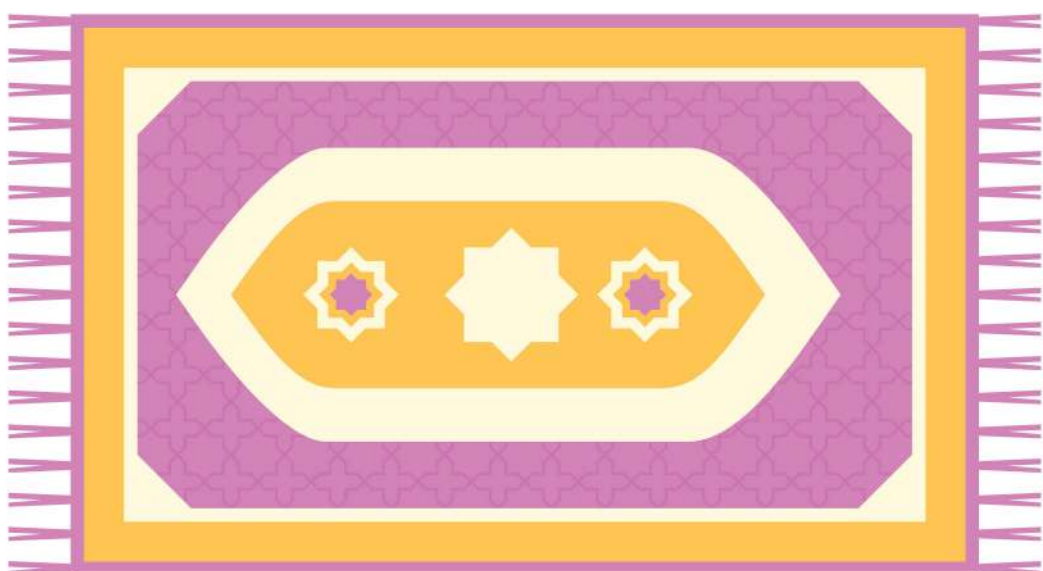
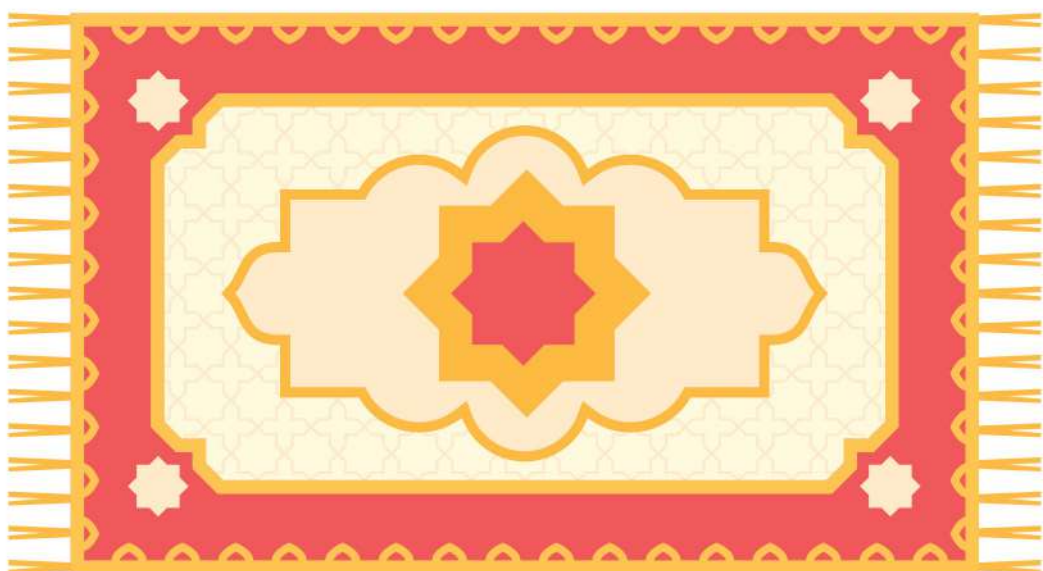
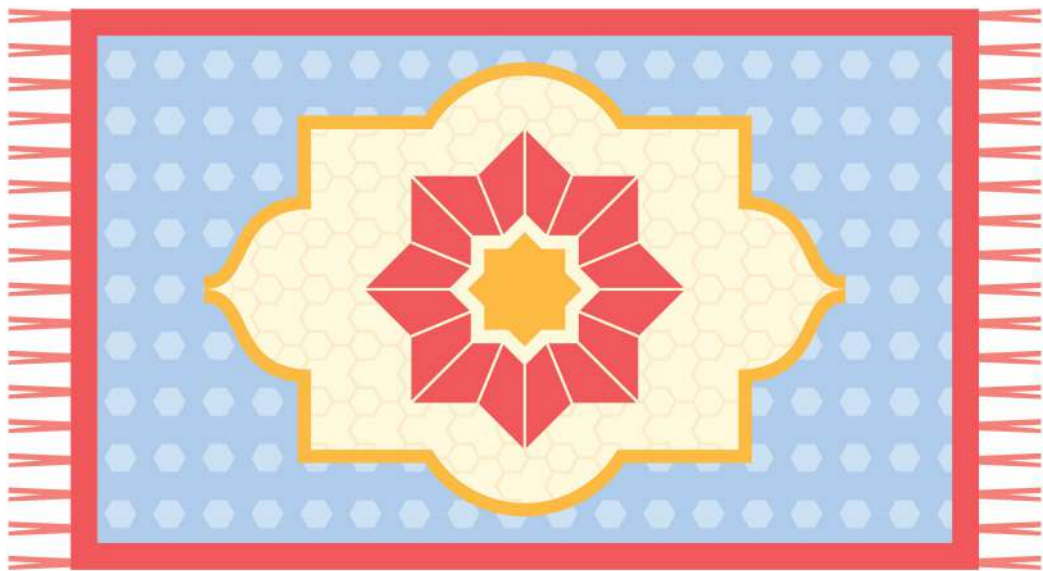












Paint the whole house pink

Cover the remaining wall panels and outside walls with these cool and realistic prints.



